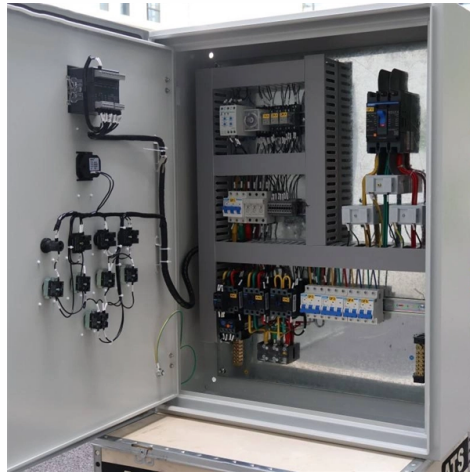


Configuration Instructions for Managed Fiber Optic Switches



Overview

This comprehensive guide walks you through everything you need to know about Fiber Optic Switch Installation, SFP Port Setup, Network Wiring, and selecting Compatible Accessories like SFP Modules, Fiber Optic Patch Cords, and Cables for Switches. Fiber Optic. CONFIGURING THE SWITCH IN DESIGO CC/CERBERUS DMS. 44This chapter provides information about Fibre Channel interfaces, its features, and how to configure the Fibre Channel interfaces. For the latest caveats and feature information, see the Bug Search Tool at. Read this document and the documents listed in the additional resources section about installation, configuration, and operation of this equipment before you install, configure, operate, or maintain this product. Users are required to familiarize themselves with installation and wiring instructions. Thank you for purchasing the Ubiquiti Networks® EdgeSwitch® Fiber. TERMS OF USE: All Ethernet cabling runs must use CAT5 (or above). The reader should in all cases consult representatives of Extreme Networks to determine whether any such changes have been made.



Article Content

Hot

Stratix 8000 and 8300 Ethernet Managed Switches Installation Instructions

2Rockwell Automation Publication 1783-IN012B-EN-P - March 2019 Stratix 8000 and 8300 Ethernet Managed Switches ATTENTION: Read this document and the documents listed in the Additional

May 06, 2026 Hot

8+16+4 Port Gigabit Managed Switch User Manual

On the "Access Configuration" page, user can configure the PVID (Port Default VLAN ID) of the Access interface. User can switch Access interface to Trunk interface or Hybrid interface via "Mode Setting".

Jan 07, 2026 Hot

004_TLN_AppBro_FiberReadyNetSwitch

Terminate your fiber optic cabling with two LC-style connectors or purchase a pre-terminated fiber optic cable with two LC-style connectors. When connecting terminated duplex fiber optic cable between

May 03, 2026 Hot

Ethernet Fiber Switch: Integrating Optics in Network Tech

Ethernet fiber switches offer unmatched immunity to electromagnetic interference. This feature is crucial in industrial environments. Machines and

Aug 28, 2025 Hot

Managed and Unmanaged Ethernet Fiber Optic Switches Products

Switches Managed and unmanaged Ethernet Fiber Optic Switches for industrial networks. Switches range from 2 to 6 ports, speeds up to 10/100/1000. Temperature hardened and low port count ideal

Sep 14, 2025 Hot

Stratix 5200 and 5800 Managed Switches User Manual (1783-IN012)

Read this document and the documents listed in the additional resources section about installation, configuration, and operation of this equipment before you install, configure, operate, or maintain this

Aug 20, 2025 Hot

4220 Series Installation Guide

This hardware installation guide provides detailed instructions for setting up 4220 Series Cloud Managed switches. It covers a wide range of topics including site preparation, rack installation, power

Sep 01, 2025 Hot

Versitron/versitron-Fiber-Optic-Switch-Installation-Setup-Guide

This comprehensive guide walks you through everything you need to know about Fiber Optic Switch Installation, SFP Port Setup, Network Wiring, and selecting Compatible Accessories like SFP

Aug 04, 2025 Hot

How to configure fiber optics on a Cisco switch

This tutorial will explain the steps required to configure fiber optics on a Cisco switch and ensure proper connectivity in your network. Configuring a Cisco Switch: Step-by-Step Guide

May 31, 2026 Hot

Installation Guide

Due to the similarity in the structure of the L2 Managed Switch series, in this Installation Guide we take TL-SG5428 as an example to illustrate Chapter 2 Installation, Chapter 3 Lightning Protection and

Feb 28, 2026 Hot

5520 Series Installation Guide: Setup and Configuration

This hardware installation guide for 5520 Series covers procedures for setting up the switches, including site preparation, rack installation, and power supply specifications. It details various models,

May 25, 2026 Hot

Scalance XC-206 2SFP Installation Instructions

This section describes how to assign IP address to the Scalance XC206-2SFP-MM Multi Mode or XC206-2SFP-SM Single Mode Ethernet Fiber Switch, how to configure the Scalance Switch via

Apr 16, 2026 Hot

EdgeSwitch ES-12F Quick Start Guide

Thank you for purchasing the Ubiquiti Networks® EdgeSwitch® Fiber. This Quick Start Guide is designed to guide you through installation and also includes warranty terms.

Nov 07, 2025 Hot

NETGEAR M4500 Intelligent Fully Managed Switches Installation Guide

Install the switch using one of the following methods: On a flat surface. Place the switch on a flat surface. In a rack. Use the rack-mount kit that is supplied with your switch, following the installation

Oct 21, 2025 Hot

Fiber Switches

Ethernet Switches with fiber uplink ports or all fiber switches, commercial grade, managed and unmanaged and PoE enabled are all available in this section.

Aug 07, 2025 Hot

Unlocking the Power of Fiber Switches: A Comprehensive Guide to ...

Jason Reeves Fiber switches play an essential role in the architecture of the latest virtual data networks, providing high capacities, better network operability, and excellent dependability. With

Sep 26, 2025 Hot

Choosing the Right Fiber Switch for Your Server Infrastructure

Explore the differences between single-mode and multimode fiber optics, understanding applications in data centers, and the importance of choosing the right cables for future-proofing your

Aug 30, 2025 Hot

Stratix 5200 Ethernet Managed Switches Installation Instructions

The switch 10/100/1000 ports automatically configure themselves to operate at the speed of attached devices. If the attached ports do not support autonegotiation, you can explicitly set the speed and

Aug 28, 2025 Hot

Managed Network Switches | Industrial Managed Switches

A managed network switch allows Ethernet devices to communicate and interact with one another within the same network. Managed switches provide the tools

Aug 09, 2025 Hot

Configuring Fibre Channel Interfaces [Cisco Nexus 5000

On Cisco Nexus 5000 Series switches, Fibre Channel capability is included in the Storage Protocol Services license. Ensure that you have the correct license

Sep 03, 2025 Hot

8 or 10 port managed Ethernet to fiber optic switches,

The EL-1000-4GM is a versatile and robust managed Ethernet switch designed for star structure, ring, or meshed network configurations. Offering flexibility, it is

Aug 11, 2025 Hot

Stratix 5400 Ethernet Managed Switches Installation Instructions

On switch catalog numbers that support communication over fiber-optic cable, SFP modules are inserted into SFP module slots on the front of the switch. These field-replaceable modules provide

Jul 14, 2025 Hot

Configuring Fibre Channel Interfaces

Send feedback to nx5000-docfeedback@cisco 1-2 Cisco Nexus 5000 Series Switch CLI Software Configuration Guide OL-16597-01 Chapter 1 Configuring Fibre Channel Interfaces Information About

Feb 21, 2026 Hot

FiberSwitch_rev5_08-07-19_DRAFT.pmd

The Management Station requires fault mask, agent configuration, agent event configuration and agent traps configuration settings to supervise the fiber optic switch using Simple Network Management

Sep 05, 2025 Hot

Configuring Fibre Channel Interfaces

Virtual Fibre Channel Interfaces Fibre Channel over Ethernet (FCoE) encapsulation allows a physical Ethernet cable to simultaneously carry Fibre Channel and Ethernet traffic. In Cisco Nexus 5000

Jan 16, 2026 Hot

Fiber Optic Network Switches | Ethernet to Fiber

Buy fiber network switches to extend ethernet network over fiber. Order Versitron high speed fiber optic network switches for fiber optic switches application. Our

Jul 12, 2025 Hot

Fiber Optic Ring Network Design Explained: Topologies,

Learn how to design a fiber optic ring network with practical diagrams, topologies, and switch setup tips. Explore ring network switch options for

Nov 23, 2025 Hot

Cisco MDS 9000 Series Interfaces Configuration Guide, Release 9.x

FEC on Cisco MDS 9000 Series switches should be disabled on 16 Gbps links. Ensure that enough buffer credits are configured on MDS ports to cover the distance for the specific frame

Dec 31, 2025

Contact Us

For more information, pricing, or custom solutions, please contact us:

Website: <https://eedenmarketing.co.za>

Email: info@moletenare-ew.co.za

Phone: +86 138 1658 3346

Address: Ningbo, China

This document is for informational purposes only. Specifications subject to change without notice.

