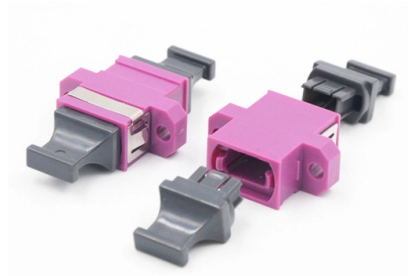


# Long strip on the back of the distribution box



## Overview

Busbars are metal strips or bars that distribute electrical power throughout the distribution box. They carry current from the main switch to individual circuit breakers, providing a reliable connection point for all circuits. Covers wiring, placement, standards, and expert tips for a compliant setup. When choosing weather proof box equipment, many people tend to focus on the thickness of the steel plate of the outer shell or the painting process, thinking that as long as the shell is hard enough, the protection level is guaranteed. It receives power from the main electrical supply and divides it into separate circuits, each. In modern electrical systems, cable distribution boxes (also known as electrical distribution boxes or distribution boxes) play a crucial role as the key hub for managing, distributing, and protecting circuits. The labels might look confusing at first. Look at this table to see how good.



## Article Content

Hot

### Complete Guide For Distribution Boxes Types

Distribution boxes, also known as electrical distribution boards or panels, are pivotal components in electrical systems, ensuring the safe and organized distribution of

Nov 15, 2025 Hot

The installation requirements for the distribution box

Learn how to install a distribution box safely and correctly. Covers wiring, placement, standards, and expert tips for a compliant setup.

Mar 16, 2026 Hot

Electrical wiring and busbar arrangement of distribution box

The distribution box is composed of independent single box connected by bolts, and the bottom of the box is composed of 3mm aluminum zinc coated steel sheet solid welding plate at the front and back.

Jun 16, 2026 Hot

The Complete Guide to Distribution Box: Installation, Types & More

Busbars are metal strips or bars that distribute electrical power throughout the distribution box. They carry current from the main switch to individual circuit breakers, providing a reliable

May 26, 2026 Hot

How to Install a Cable Distribution Box Safely and

Box installation: Place the cable distribution box on the installation surface, align with the expansion bolt position, and tighten the screw firmly.

Jan 16, 2026 Hot

Full Guide to Understanding Septic Tank Distribution

Find out the crucial key to solving septic tank distribution box problems for optimal system performance - don't miss this essential guide!

Aug 18, 2025 Hot

Distribution Box: Key Functions, Components, and

In essence, the distribution box acts as a central hub, distributing electricity while protecting the system from overloads and faults. This makes it a

Mar 11, 2026 Hot

### How to Read and Interpret Your Distribution Box Labels

Understand your distribution box labels to identify circuits, improve safety, and troubleshoot electrical issues in your home with confidence.

Jul 25, 2025 Hot

### What Is an Electrical Distribution Box and Why Is It

An electrical distribution box distributes power safely, prevents overloads, and protects circuits, ensuring efficient and reliable electrical systems.

Mar 20, 2026 Hot

### Distribution Box Installation: A Complete Guide to Safe

The distribution box, often referred to as a breaker box, fuse box, or electrical panel, is a critical component of any electrical system. It acts as the central hub for

Jul 14, 2025 Hot

[cs-178-project/imdb.vocab](#) at main · [apmalani/cs-178-project](#)

Contribute to [apmalani/cs-178-project](#) development by creating an account on GitHub.

Sep 28, 2025 Hot

### Installation Standards and Safety Precautions for Distribution Boxes ...

Switch box shall be distributed by the final sub-distribution box. 2. The power distribution box and switch box must be rainproof and dustproof. 3. When the construction site stops working for

May 13, 2026 Hot

### Electrical Distribution Box: Complete Panel Types Guide

Whether you call it a distribution box, panel, circuit breaker panel, breaker box, or load center, you're talking about the same essential piece of

Jul 08, 2025 Hot

### What is a Distribution Box? - A Comprehensive Guide

A distribution box organizes and controls power flow, ensuring safety and efficiency in electrical systems.

Jul 04, 2025 Hot

### What Is a Distribution Box?

Some distribution boxes have a longer cord than others. When choosing a distribution box, make sure the cord is long enough to reach the main

May 24, 2026 Hot

### How Does a Power Distribution Box Work

Learn how a power distribution box works step by step—from incoming power to circuit protection and smart monitoring—for safe, efficient electricity delivery.

Jul 15, 2025 Hot

### Understanding Distribution Boxes: A Comprehensive Guide

A distribution box, also known as a power distribution box or electrical distribution box, is used to distribute electrical power safely to multiple

Oct 04, 2025 Hot

### How Long Can An Outdoor Waterproof Electrical Distribution Box

If the sealing ring loses its elasticity due to aging, even if the casing looks brand new, the internal electrical components may malfunction due to condensation or water leakage. Ultimately, the

Oct 05, 2025 Hot

### A Definitive Guide To Distribution Boxes

The distribution box acts as the center of power distribution, distributing electricity to all connected devices. A distribution box, also known as a distribution board, panel board, breaker

Jul 29, 2025 Hot

### What is an Electrical Distribution Box? A

Discover everything you need to know about electrical distribution box! Learn about types, components, and how to choose.

Sep 04, 2025 Hot

[unsupervised\\_topic\\_modeling/topics/en/17/100/100/topics](#) at ...

Contribute to [annontopicmodel/unsupervised\\_topic\\_modeling](#) development by creating an account on GitHub.

Nov 08, 2025 Hot

### Complete Guide For Distribution Boxes Types

Busbars are conductive bars or strips that distribute electrical power to various circuits within the distribution box. They are typically made of copper or aluminum

Dec 30, 2025 Hot

### What is the Internal Structure of The Distribution Box

Learn about the internal structure of a distribution box, its components, functions, and key types. Understand its role in electrical systems

Nov 12, 2025 Hot

### How Long Can An Outdoor Waterproof Electrical Distribution Box

Ultimately, the long-term reliability of the waterproof electrical junction box largely depends on how long this sealing strip can withstand the erosion of time.

Jan 22, 2026 Hot

### Understanding Distribution Boxes: Your Guide to Power

Weatherproof Distribution Boxes These serve specific outdoor purposes, with rain, dust, and extreme temperatures sealed shut, protecting any

Jan 12, 2026 Hot

### Distribution Boxes: Types and Functions

Use the table below to quickly identify which distribution box type best matches your application: This type of distribution box is typically used

Jan 31, 2026

## Contact Us

For more information, pricing, or custom solutions, please contact us:

Website: <https://eedenmarketing.co.za>

Email: [info@moletenare-ew.co.za](mailto:info@moletenare-ew.co.za)

Phone: +86 138 1658 3346

Address: Ningbo, China

This document is for informational purposes only. Specifications subject to change without notice.

