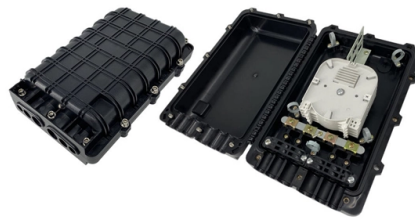


Server optical-to-electrical converter module not recognized



Overview

There is a Check Connections message that says ECal module not connected to the system. First try to restart the driver (see below for directions). Check compatibility between the optical module and switch. Most switch brands have specific compatibility requirements. Hello, I have a brand new E810-XXVDA2 network adapter (Intel branded, not OEM), and I'm setting it up for the first time. I want to connect it to my switch, which is a Ubiquiti usw-pro-aggregation, on an SFP28 port. The client is Windows Server 2022. I have the latest Intel driver for Windows. Information contained in this manual is believed to be accurate and reliable. If possible, remove and reinstall the optical module to. The Keysight N7005A Optical-to-Electrical Converter is a high-sensitivity photodetector module designed for direct optical-to-electrical conversion of optical signals into Infiniium UXR realtime oscilloscope with AutoProbe III interface (≥ 40 GHz).



Article Content

Hot

77070E-3G-1 3G/HD/SDI Re-Clocking Optical to Electrical Converter

The Evertz fiber optic modules come with cable lockout devices, to prevent the user from damaging the fiber by installing a module into a slot in the frame that does not have a suitable I/O module.

Dec 26, 2025 Hot

Troubleshooting Common SFP Module Issues

Learn how to troubleshoot common SFP module issues including physical faults, hardware damage, compatibility, and configuration errors. This guide provides

Feb 19, 2026 Hot

Solved: E810-XXVDA2 unable to establish link at 25G

Unplugging the SFP28 module at either end of the link stopped these messages from being emitted. Are these errors thrown by the ice driver when it's

Nov 14, 2025 Hot

USB to UART Circuit Issues "Device Not Recognized"

I recently made a USB to UART circuit using a silicon labs chip CP2102N-A02-GQFN24 for my homemade espresso machine's motherboard. I

Mar 18, 2026 Hot

77070E-DS3/E3 Optical to Electrical Converter for DS3/E3 Signals

The Evertz fiber optic modules come with cable lockout devices, to prevent the user from damaging the fiber by installing a module into a slot in the frame that does not have a suitable I/O module.

May 19, 2026 Hot

ECal Module Troubleshooting

There is a Check Connections message that says ECal module not connected to the system. First try to restart the driver (see below for directions). If that does not work, then reboot the PNA instrument. It

Nov 01, 2025 Hot

WordHTML

WordHTML - Online Converter, Editor and Cleaner Free online Word to HTML converter with built-in code cleaning features. Open, edit and save Word

Dec 10, 2025 Hot

What Is an Optical Module and Its FAQs (V200)

As an important part of fiber-optic communication, an optical module is a photoelectric converter which converts electrical signals into optical signals and vice versa.

Oct 07, 2025 Hot

Differences Between Electrical Port Modules And Optical Port Modules

An electrical port module, also known as an optical-to-electrical port converter module, is a hot-swappable device with an SFP form factor. It features an RJ45 connector and uses UTP cables as

Aug 23, 2025 Hot

6-channel VME optical-to-electrical converter | Highland

The module receives power from the VME backplane; it does not connect to the VME data bus, and passes all grant signals. The V730 also accepts power from the

Apr 07, 2026 Hot

port is disconnected due to optical module faulty

Use the idle optical module on the storage device to exchange with PO and check whether the fault is rectified. If the fault persists, it indicates that the optical module is not faulty.

Apr 21, 2026 Hot

N7005A 60 GHz Optical-to-Electrical Converter | Keysight

The N7005A Optical-to-Electrical Converter is a high-sensitivity photodetector module for optical-to-electrical conversion of optical signals into oscilloscopes.

Jul 06, 2025 Hot

FTDI USB serial converter not recognized

Hi all, My PC won't always recognize my Diecimila -- say only about 1 of each 20 attempts. A "USB device not recognized" balloon pops up in the taskbar, and "Unknown device"

Sep 07, 2025 Hot

Troubleshooting and Repairing Optical Transceiver Failures in

Have you ever experienced an unexpected network outage due to the failure of an SFP/SFP+ optical transceiver? Network outages can bring your ability to communicate and work to a

Feb 10, 2026 Hot

N7004A Optical to Electrical Converter

The N7004A 33 GHz optical-to-electrical converter directly converts optical signals into electrical signals for convenient analysis on a compatible Infiniium real-time oscilloscope. The N7004A is a high

Sep 27, 2025 Hot

Optical Module Application: Common Problems & Troubleshooting

Based on typical issues encountered with optical modules in daily switch applications, this document summarizes basic troubleshooting steps for resolving common faults:

Jul 06, 2025 Hot

5 troubleshooting tips for connecting the SFP's

So, if you're experiencing problems when connecting devices or disruptive / intermittent data rates, check the connector, the module, and the module slot to

Apr 22, 2026 Hot

Common Utility Fiber Media Converters problems and

1. Compatibility media converter problems One of the most common issues with fiber media converter Ethernet is compatibility. Since fiber optic

Aug 26, 2025 Hot

microcontroller

At what point should my device be recognized as a serial device (COMx) on a Windows PC? Would powering the TTL/RS232 converter be

Apr 20, 2026 Hot

Keysight N7004A /N7005A Optical-to-Electrical Converters

When using N7005A, ensure that it is not connected to the optical signal until both its modules (AutoProbe III interface module and O/E module) are connected to the oscilloscope.

Sep 20, 2025 Hot

What is an Optical Transceiver and How Does It Work?

Let's get started! Part 1. What is an Optical Transceiver? An optical transceiver is an electronic device which converts electrical signals to optical

Feb 02, 2026 Hot

N7005A 60 GHz Optical-to-Electrical Converter | Keysight

STM has not approved this product for purchase through SAP Ariba Catalog. Please proceed as non-catalog order by contacting your Keysight representative to

Feb 19, 2026 Hot

Optical Module Troubleshooting

If not, replace the optical fiber or optical module. A single-mode optical module (generally with a center wavelength of 1310 nm or 1550 nm) must work with a single-mode optical fiber (generally yellow).

Aug 16, 2025 Hot

Everything You Need to Know About Optical Modules

Optical modules are electronic devices used in communication systems to transmit optical signals. These modules convert electrical signals into optical

May 17, 2026 Hot

Standard Troubleshooting for SFP modules and Media Converters

Troubleshooting guidance for SFP-to-media-converter Scenario In application scenario 2, connect the Ethernet port to the switch's port or other Ethernet devices with the Ethernet cable,

Oct 02, 2025 Hot

Dell EMC PowerEdge Servers Troubleshooting Guide

The information in this troubleshooting guide is intended primarily for administrators, who are responsible for managing the Dell PowerEdge servers, however might be useful for all users of Dell

Apr 24, 2026 Hot

Information About an Optical Module Cannot Be Read

Procedure Check whether the optical module has been certified for Huawei Ethernet devices. If not, contact the supplier of the optical module. If possible, remove and reinstall the optical

Apr 07, 2026 Hot

Troubleshooting Your Optical Transceiver: A

An optical transceiver, also known as an optical module, is a device that converts electrical signals into optical signals for transmission over fiber-optic

Aug 31, 2025 Hot

KEYSIGHT N7004A MEDIA CONVERTER USER MANUAL | ManualsLib

The N7004A 33 GHz optical-to-electrical converter directly converts optical signals into electrical signals for convenient analysis on a compatible Infiniium real-time oscilloscope.

Aug 04, 2025

Contact Us

For more information, pricing, or custom solutions, please contact us:

Website: <https://eedenmarketing.co.za>

Email: info@moletenare-ew.co.za

Phone: +86 138 1658 3346

Address: Ningbo, China

This document is for informational purposes only. Specifications subject to change without notice.

