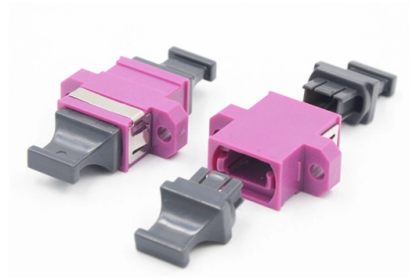


Weight of ladder-style steel cable tray



Overview

The general formula for calculating the weight of a ladder tray is: $\text{Weight of ladder tray} = \text{Material Density} \times \text{Volume}$ Where: Material Density is the inherent property of the tray material (e. Volume is the total volume of the tray, calculated based on its. The Cable Tray Weight Calculation involves considering various factors, including tray specifications, material, and thickness. In this guide, we'll walk you through the step-by-step process for calculating cable tray weight, while providing examples for both channel trays and ladder trays. This. We have more than a decade's worth of experience making and designing quality cable tray and cable management systems. The mechanical and electrical characteristics, tests, certifications, overall quality management, recommendations mentioned. Cable tray (or cable ladder) systems are a popular alternative to electrical conduit systems, as they have an outstanding record for dependable service, design flexibility and cost savings in commercial and industrial applications.



Article Content

Hot

IEK Cable Installation Systems

Ladder type cable trays Ladder type cable trays made of galvanized steel are used for mounting cable routings for wires and cables when arranging open-type electric systems and surface wiring on

Apr 11, 2026 Hot

B-Line series Cable Tray Design Considerations

On average, aluminum cable tray weighs just 60% of its steel equivalent, but it is capable of carrying heavier loads than steel cable tray. Aluminum's light weight significantly reduces the cost of

Jan 11, 2026 Hot

Electrical Data Sheet_Ladder Tray Weights_METRIC_05-27-10 dd

Ladder Cable Tray - Weights, kg/m ... Values are applicable to all resin systems, where possible. 0710 16602 Central Green Blvd. Houston, TX 77032

Dec 18, 2025 Hot

Ladder Cable Trays | McMaster-Carr

Choose from our selection of ladder cable trays, including cable and hose trays, heavy duty open cable and hose carriers, and more. Same and Next Day Delivery.

Dec 15, 2025 Hot

Cable Tray Weight Chart: Accurate Per Meter Weights

Need the cable tray weight chart? Find accurate per-meter weights for steel, aluminum, and FRP trays. Click to explore reliable data for your project needs.

Aug 04, 2025 Hot

Best Practice Guide to Cable Ladder and Cable Tray Systems

Cable ladder systems and cable tray systems are designed for use as supports for cables and not as enclosures giving full mechanical protection. They are not intended to be used as ladders, walk ways

Dec 28, 2025 Hot

Ladder Cable Tray

Ladder cable tray offer high strength as per specification which made them perfect for heavy-duty power distribution in industries, manufacturerd using pre

Jan 03, 2026 Hot

Cable Ladder Trays (Welded and Swaged)

Cable Ladder Trays (Welded & Swaged) Cable Ladder Trays, are designed to meet most requirements of cable and electrical wire installations and comply to local

Nov 20, 2025 Hot

CABLE LAddEr TrAY

In order to choose construction pieced of sufficient weight load ability, the load of each Cable Tray or Cable Ladder at the support point has to be determined.

Jan 05, 2026 Hot

Ladder Type Cable Trays

Ladder tray (looks like a ladder) is typically used in feeder applications for longer runs of multiple cables for higher current carrying capacity and weight. Ladder

Apr 17, 2026 Hot

CABLE TRAY SYSTEMS GUIDE

Steel Ladder System Hubbell's NEXTFRAME® Ladder Tray is the effective and widely used cable runway that supports and delivers bundles of cable between cabinets, racks, and closets, along

Nov 28, 2025 Hot

Best practice guide to cable ladder and cable tray

Cable ladder and cable tray systems The following recommendations are intended to be a practical guide to ensure the safe and proper installation of

Dec 06, 2025 Hot

GUIDE CABLE TRAYS TECHNICAL

If it has excellent electrical continuity and is integrated in the installation's equipotential bonding system, a metal cable tray reduces the coupling's impact and thus contributes to good EMC of the electrical

May 06, 2026 Hot

Cable Ladder Cable Tray Weight Calculation Guide

In this guide, we'll walk you through the step-by-step process for calculating cable tray weight, while providing examples for both channel trays and

Feb 11, 2026 Hot

Ladder Trays | Cable Tray and Reels | Wire and Cable Management

Refers to the approximate height of a cable tray used for specifying. Selecting a specific height will show cable trays with that height, as well as cable tray accessories compatible with that height.

May 08, 2026 Hot

Manufacturer of GRP/FRP Pipe & Chemical Equipment

FRP trays are available in multiple configurations (ladder, solid bottom, perforated, channel, wire mesh, trough, etc.) to suit any cable management need. Unlike

Apr 06, 2026 Hot

Enduro_Specification_Ladder Cable Tray_04-30-21

UL (Underwriters Laboratories, Inc.) Standard for Non-Metallic Cable Tray Systems
CSA INTERNATIONAL (National Standard of Canada) CAN/CSA-C22.2 No. 126 Cable Tray Systems

Jan 18, 2026 Hot

Steel Ladder Tray 6" High Straight Sections | Ladder Trays | Cable ...

Steel straight ladder tray sections with 6" side rails, available in 6"-36" widths and 10"-24" lengths. Compliant with NEMA 12C, 20B, and 20C standards.

Sep 06, 2025 Hot

304 Stainless Steel Ladder Tray

Cope Swage Ladder Tray offers rigid 304 stainless steel cable management for industrial use.

Jan 24, 2026 Hot

Cope Ladder Master Spec

Cable Tray Hold Downs - Cable tray supported on standard 1-5/8 inch strut shall be held down with Cope style hold-down brackets. Such as the 9131 series for ladder type cable trays and 90XX series

Nov 24, 2025 Hot

CABLE TRAY, CABLE LADDER, CABLE TRUNKING CATALOGUE

Cable Ladder. Straightsections of ladder type cable trays consist of two longitudinal side rails, connected by individual tranverse, or rungs, which are welded to the side rails or bolted in case of GI

Jan 28, 2026 Hot

Enduro_Specification_Ladder Cable Tray_04-30-21

The glass fiber to resin content shall be maintained between 45 to 65 percent by weight in all pultruded components except flat sheet which shall be 35 to 45 percent; and 25 to 45 percent by weight in all

Mar 29, 2026 Hot

B-Line series Cable Tray Design Considerations

As an industry leader in cable tray, Eaton offers one of the widest ranges of cable management solutions available in the market today with its B-Line series portfolio. With unmatched quality and service, we

Feb 25, 2026 Hot

Ladder Type Cable Trays, Cable Trays, Manufacturer, India

These cable trays also available as Welded Type with high grade galvanized sheet and other materials such as painted and powder coated finish on mild steel.

Jun 08, 2026 Hot

Cable Tray Sizes and Weights Chart | PDF

The document provides pricing information for ladder cable tray and perforated

Dec 05, 2025 Hot

Types of Cable Trays - Advantages, Applications and Sizes

Explore the types of cable trays, their advantages, applications, and standard sizes. Learn how they improve cable management and support various industries.

Jul 20, 2025 Hot

TECHNICAL AND SIZING DATA

Component selection used in the supporting structure is to be based on the allowable load (w) for the ladder tray being used as well as the weight of the ladder tray (t) and covers (c).

Sep 17, 2025 Hot

TECHNICAL AND SIZING DATA

Steel ladder tray has load thermal expansion (low coefficient) and provides electric shielding for low level control circuits when used in electro-magnetic shielded ladder trays.

May 20, 2026

Contact Us

For more information, pricing, or custom solutions, please contact us:

Website: <https://eedenmarketing.co.za>

Email: info@moletenare-ew.co.za

Phone: +86 138 1658 3346

Address: Ningbo, China

This document is for informational purposes only. Specifications subject to change without notice.

