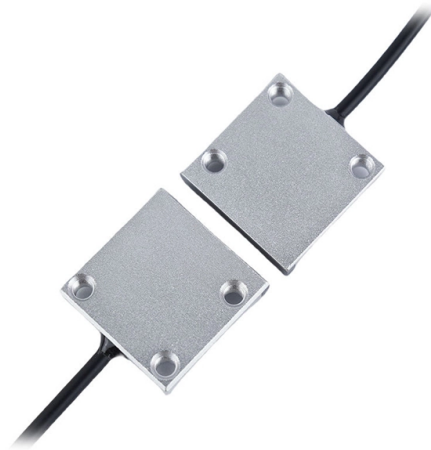


# What is live-line protection for a distribution box



## Overview

Hot Line Tag is a North American distribution network terminology for a device state when used for live line work. This effectively blocks auto-reclosing too, as self-initiated. A1-1. 1 The Guidelines are applicable to insulating pole live line working and insulating glove live line working performed on 10 kV (20 kV) distribution lines at an altitude of 1,000 m and below. Transmission lines operate at voltage levels from 69kV to 765kV, and are ideally tightly interconnected for reliable operation. Factors like. In electrical engineering, live-line working, also known as hotline maintenance, is the maintenance of electrical equipment, often operating at high voltage, while the equipment is energised. As the utility business primary directive is to maintain power reliability and uptime for customers, engineers have devised many risk mitigation techniques to. In order for utilities to provide continuity of service, live line maintenance on energized distribution and transmission lines is required. The survey was issued in 2000 and responses were received through 2001.



## Article Content

Hot

### Live-Line Operation and Maintenance of Power Distribution Networks

Excellent reference outlining the technical basis and working principles of live-line working, with current application technology, tools and working methods Introduces live-line working technology for the

Apr 08, 2026 Hot

### Transmission Line Protection: Schemes & Relay Zones

Transmission line protection is often confused with distribution feeder protection, but the engineering priorities are different. Transmission lines are usually part of a networked high-voltage

Aug 23, 2025 Hot

### Low-Voltage Distribution Live Line Working

Summary This chapter introduces organizational measures, technical measures and working requirements for low-voltage distribution live line working, focusing on details of working

Aug 16, 2025 Hot

### How to Improve Operator Safety During Live Line Work

Aptly named for its most common application, the NOJA Power OSM Recloser with RC Series Control has a "Live Line" function. When engaged, this function

Jan 20, 2026 Hot

### Introduction to Line Protection | Delgado Relay Protection Reference

Effective line protection prevents equipment damage, minimizes downtime, and protects personnel from potential hazards. Line protection is engineered to detect faults such as short circuits,

Feb 15, 2026 Hot

### Live-line working

In general, there are three methods of live-line working which help workers avoid the considerable hazards of live line working. In various ways, they all serve to prevent current flowing from the live equipment through the worker. Hot stick or Live Line Tool Hot sticks are used in live line work by having the worker remain at a specified distance from the live parts and carry out the work by means o

Jun 05, 2026 Hot

## Transmission Line Protection Theory

The loadability limits and requirements on transmission lines can introduce additional constraints for protective relaying, as protection must be able to allow the transmission line to be temporarily

May 11, 2026 Hot

## Rules for power distribution in LV switchgear and

Power distribution and LV switchgear In designing a power distribution concept, encompassing the sizing of systems and devices, it is

Jul 11, 2025 Hot

## Best Practice Safety Brief

Apply Insulating Protective Equipment (IPE) to prevent accidental/inadvertent contact with any conductive object within your extended reach that could have a difference of potential and would

Apr 21, 2026 Hot

## Appendix 1: General Guidelines for Safety of Live Line Working

Live line working on distribution lines with other voltage classes can also follow the Guidelines. For live line working at an altitude of 1,000 m and above, safety distances and lengths of insulation between

Jan 21, 2026 Hot

## hydrovac cover dd

One of the most important parts of a live line tool is the insulated pole. It provides the dielectric strength that protects the worker. It is also the most easily damaged and requires the greatest care in

Jul 30, 2025 Hot

## Best Practice in Lightning Protection for Distribution

As demand for reliable power continues to grow worldwide, improving the lightning reliability of distribution systems becomes more and more common.

Sep 16, 2025 Hot

## Line Protection Schemes

Line protection schemes are an essential component of any electrical power transmission and distribution system. These schemes play a crucial role in mitigating the impact of

Aug 25, 2025 Hot

BEST PRACTICE: INSULATE & ISOLATE SUBJECT: I& I TECHNIQUES FOR THE LIVE ...

PRACTICE DESCRIPTION: Properly performed Insulate and Isolate (I& I) techniques used in conjunction with the necessary insulating live line tools allows qualified personnel to safely work on

Oct 23, 2025 Hot

Front Matter

One way is to work directly on energized distribu-tion lines or equipment, namely distribution live working; the other is to work on distribution lines or equipment under power outage while continuing

Jun 26, 2026 Hot

The Ultimate Guide to Distribution Box Types

Discover the key types of distribution boxes with NUOMAK's comprehensive guide. Learn about Main Distribution Boards (MDB), Consumer Units, Transfer

May 23, 2026 Hot

Transmission Line Protection Theory

The D90Plus Line Protection System and the D60 Line Distance Relay handles the challenge of dual-breaker line terminals by supporting two three-phase current inputs to support breaker failure,

Sep 16, 2025 Hot

Protection of Lines or Feeder

Transmission Line Protection Definition: Transmission line protection is a set of strategies used to detect and isolate faults on power lines, ensuring

Dec 19, 2025 Hot

Free Markdown to HTML Converter

Ordered lists use a number at the beginning of the line. The numbers do not need to be incremented - this will happen for you automatically by the HTML. That makes it easier to re-order your ordered

Dec 01, 2025 Hot

DISTRIBUTION LINE PROTECTION PRACTICES

Two new sections were added to address the impact of organizational considerations on distribution protection, and to summarize emerging technologies and applications relevant to distribution protection.

Jun 16, 2026 Hot

## The Complete Guide to Distribution Box: Installation, Types & More

What's the difference between a distribution box and a sub-panel? A distribution box typically refers to the main electrical panel that receives power from the utility service. A sub-panel is

Sep 03, 2025 Hot

[zxcvbn-rs/src/frequency\\_lists.rs at master](#)

Port of Dropbox's zxcvbn password strength library for Rust - shsoichiro/zxcvbn-rs

Mar 21, 2026 Hot

Detailed introduction of safety requirements for distribution box

The distribution box and switch box shall be made of steel plate (with thickness of 1.2-2.0mm) or flame-retardant insulation material. 5. The power switch installed in the distribution box

Jul 04, 2025 Hot

### How Does a Power Distribution Box Work

Learn how a power distribution box works step by step—from incoming power to circuit protection and smart monitoring—for safe, efficient electricity delivery.

Sep 06, 2025

## Contact Us

For more information, pricing, or custom solutions, please contact us:

Website: <https://eedenmarketing.co.za>

Email: [info@moletenare-ew.co.za](mailto:info@moletenare-ew.co.za)

Phone: +86 138 1658 3346

Address: Ningbo, China

This document is for informational purposes only. Specifications subject to change without notice.

